

47W2X™

4.7 RM

- Late Group IV soybean with Roundup Ready 2 Xtend® technology
- Chloride excluder
- Good score against Stem Canker
- Resistant to Brown Stem Rot

CHARACTERISTICS

PLANT HEIGHT	Medium Tall
PLANT WIDTH	Medium
FLOWER COLOR	White
HILUM COLOR	Buff
POD COLOR	Brown
PUBESCENCE COLOR	Gray
GROWTH TYPE	Indeterminate

AGRONOMICS

EMERGENCE	Average
STANDABILITY	Average
SHATTER RESISTANCE	Average
FLOOD TOLERANCE	Good
SOIL CHLORIDE	Excluder

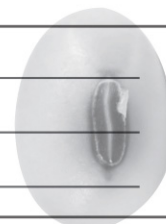
DISEASE TOLERANCE

PHYTOPHTHORA ROOT ROT RATING	Good
PHYTOPHTHORA ROOT ROT GENE	A
SUDDEN DEATH	Average
SCN SOURCE	88788
SCN RACES	R14=VG, R3=E
ROOT KNOT NEMATODE	N/A
FROGEYE	Fair
STEM CANKER	Good
CHARCOAL ROT	Poor
CERCOSPORA	N/A

MANAGEMENT RECOMMENDATIONS

WIDE ROWS	Very Good
NARROW ROWS	Good
HIGHER POPULATIONS	Not Recommended
LOWER POPULATIONS	Very Good
NO TILL	Very Good
IRRIGATION	Good
HIGH ORGANIC	Good
LIGHT & SANDY SOILS	Fair
CLAY & VARIABLE SOILS	Excellent
LATE PLANTING	Excellent

NOTES: _____



IMPORTANT: Characteristic scores provide key information useful in selecting and managing products in your area. Information and ratings are based on comparisons with other products sold by AgVenture, Inc.. Individual results may vary, and performance may vary from location to location and from year to year. This result may not be an indicator of results you may obtain as local growing, soil and weather conditions may vary. Growers should evaluate data from multiple locations and years whenever possible. Scores represent an average of performance data across areas of adaptation, multiple growing conditions, and a wide range of both climate and soil types, and may not predict future results. Individual product responses are variable and subject to a variety of environmental, disease and pest pressures. Please use this information as only one component of your product positioning decision.

Roundup Ready 2 Xtend® is a registered trademark used under license from Monsanto Company.

Liberty®, LibertyLink® and the Water Droplet Design are trademarks of BASF.

The transgenic soybean event in Enlist E3® soybeans is jointly developed and owned by Corteva Agriscience and M.S. Technologies L.L.C.

Enlist Duo® and Enlist One® herbicides are not registered for sale or use in all states or counties. Contact your state pesticide regulatory agency to determine if a product is registered for sale or use in your area. Enlist Duo and Enlist One are the only 2,4-D products authorized for use with Enlist crops. Consult Enlist herbicide labels for weed species controlled. Always read and follow label directions.

Varieties with the Glyphosate Tolerant trait contain genes that confer tolerance to glyphosate herbicides. Glyphosate herbicides will kill crops that are not tolerant to glyphosate.

DO NOT APPLY DICAMBA HERBICIDE IN-CROP TO SOYBEANS WITH Roundup Ready 2 Xtend® technology unless you use a dicamba herbicide product that is specifically labeled for that use in the location where you intend to make the application. IT IS A VIOLATION OF FEDERAL AND STATE LAW TO MAKE AN IN-CROP APPLICATION OF ANY DICAMBA HERBICIDE PRODUCT ON SOYBEANS WITH Roundup Ready 2 Xtend® technology, OR ANY OTHER PESTICIDE APPLICATION, UNLESS THE PRODUCT LABELING SPECIFICALLY AUTHORIZES THE USE. Contact the U.S. EPA and your state pesticide regulatory agency with any questions about the approval status of dicamba herbicide products for in-crop use with soybeans with Roundup Ready 2 Xtend® technology.

ALWAYS READ AND FOLLOW PESTICIDE LABEL DIRECTIONS. Soybeans with Roundup Ready 2 Xtend® technology contain genes that confer tolerance to glyphosate and dicamba. Glyphosate herbicides will kill crops that are not tolerant to glyphosate. Dicamba will kill crops that are not tolerant to dicamba.

Corteva Agriscience is a member of Excellence Through Stewardship® (ETS). Corteva Agriscience products are commercialized in accordance with ETS Product Launch Stewardship Guidance and in compliance with the Corteva Agriscience policies regarding stewardship of those products. In line with these guidelines, our product launch process for responsible launches of new products includes a longstanding process to evaluate export market information, value chain consultations, and regulatory functionality. Growers and end-users must take all steps within their control to follow appropriate stewardship requirements and confirm their buyer's acceptance of the grain or other material being purchased. For more detailed information on the status of a trait or stack, please visit www.biotradestatus.com.

Excellence Through Stewardship® is a registered trademark of Excellence Through Stewardship.

Components of LumiGEN™ seed treatments are applied at a Corteva Agriscience production facility, or by an independent sales representative of Corteva Agriscience or its affiliates. Not all sales representatives offer treatment services, and costs and other charges may vary. See your sales representative for details. Seed applied technologies exclusive to Corteva Agriscience and its affiliates.

